



147 Matthew Flinders Drive Port Macquarie, NSW

 4

 2

 3

The Ultimate Coastal Lifestyle on Lighthouse Beach

Lifestyle untapped... resting beachside and overlooking oceanfront reserve, this Lighthouse Beach home is bathed in sunlight and cooled by fresh sea breezes.

A 200m walk from the sand at the 'camel ride' end of coveted Matthew Flinders Drive, you'll love the allure of an address tailored for coastal living.

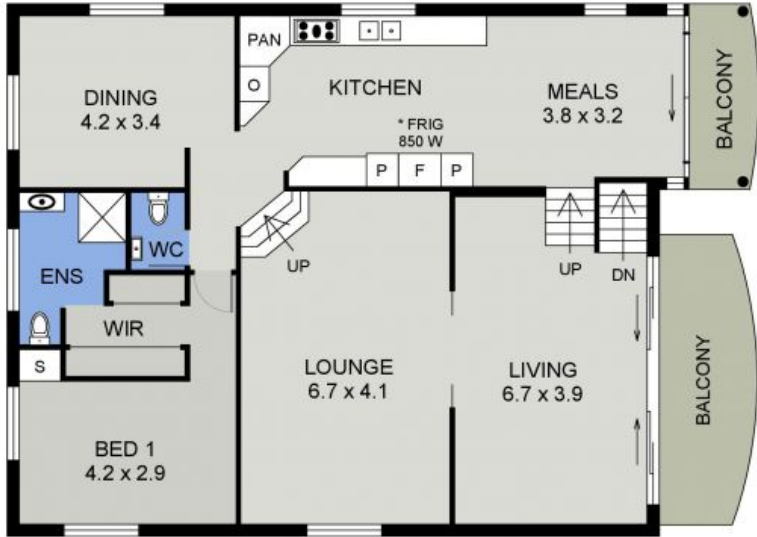
Multi level living, the lower level floor plan provides two bedrooms with built-ins, while a third with sliding door access to the wrap around rear court yard could be re-purposed as a lounge/sitting room. A generous bathroom is appointed with a spa bath and shower, while a separate toilet is convenient....

Price: \$750 per week

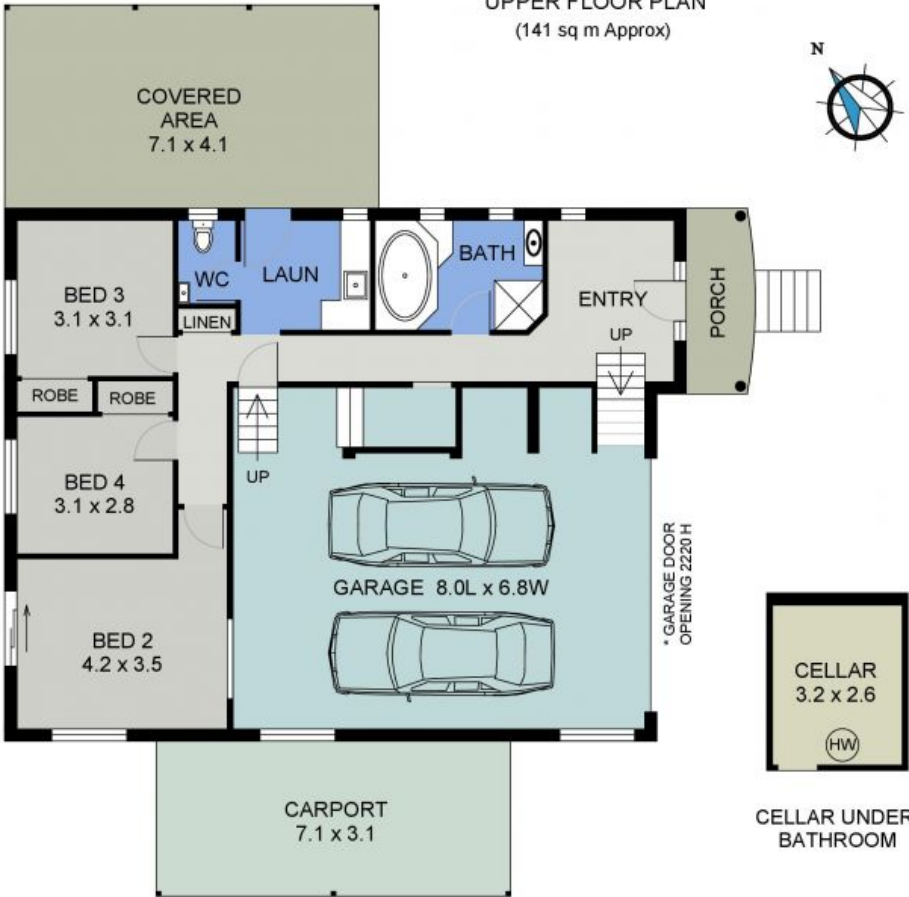


Yolanda Tobin

0418 143 611

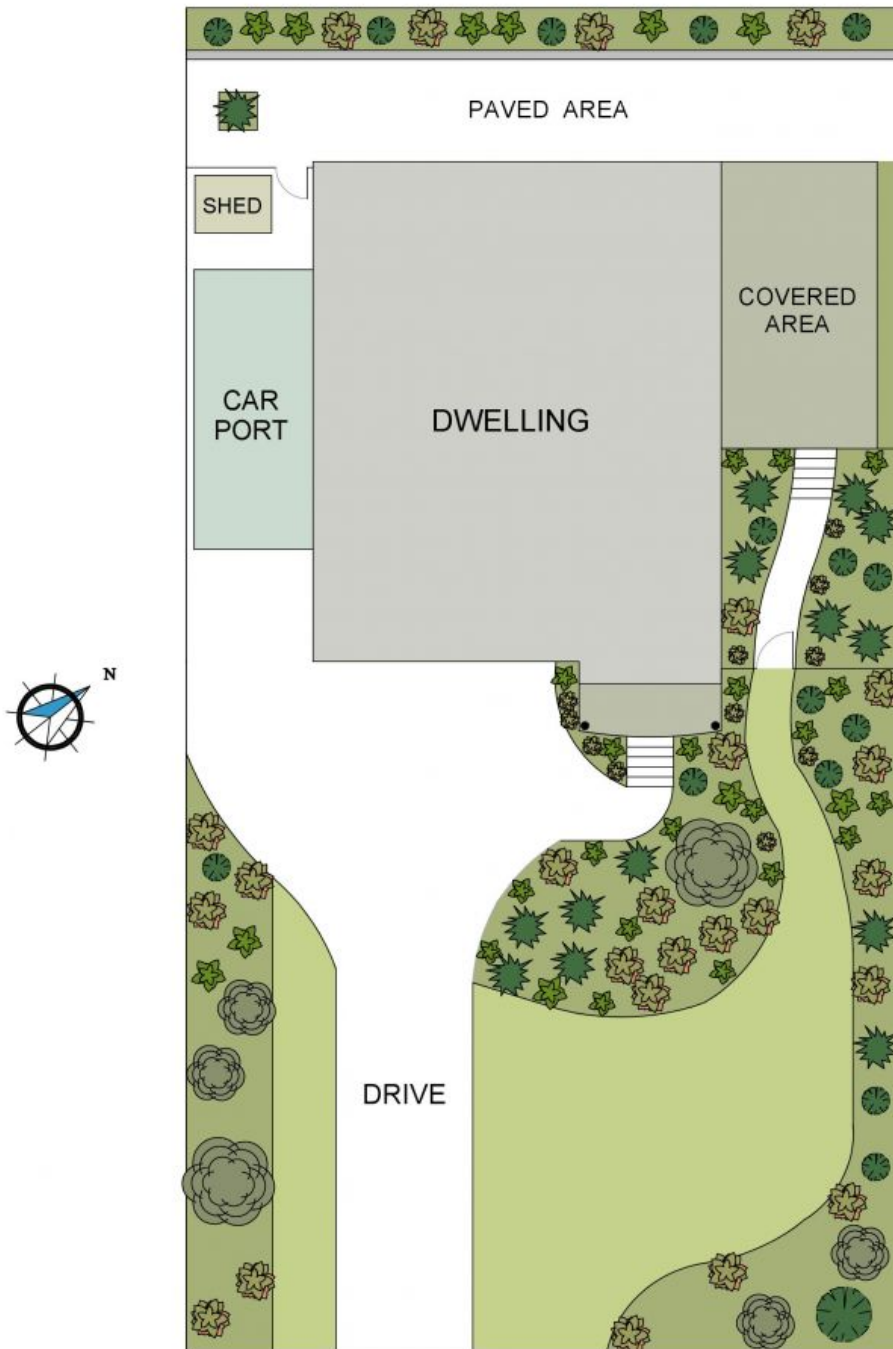


UPPER FLOOR PLAN
(141 sq m Approx)



LOWER FLOOR PLAN
(141 sq m Approx)
Scale - 1:115

147 MATTHEW FLINDERS DR
PORT MACQUARIE



SITE PLAN
(Land Size 632 sqm)
Scale - 1:150

147 MATTHEW FLINDERS DR
PORT MACQUARIE